

Perfilería Liviana

en Acero Galvanizado

para sistemas de
paredes livianas y cielos



Perfilería Liviana

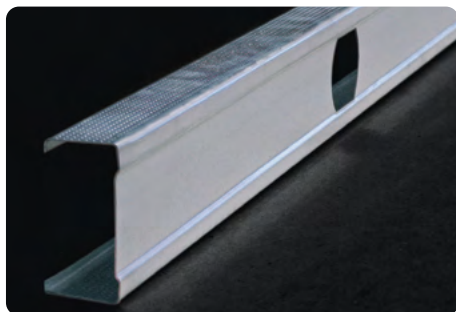
Perfiles rolados en frío, diseñados para estructurar cerramientos livianos tanto en paredes como cielos. Fabricados en nuestra planta MetalGypsum de acuerdo a las normas ASTM C645 con materiales importados de la mejor calidad y con recubrimiento galvanizado G40, según lo establecido por la norma ASTM A653.

Perfilería Liviana en Acero Galvanizado

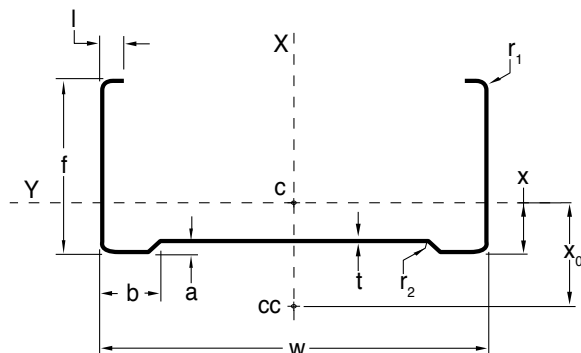


para sistemas de paredes livianas y cielos

STUD (POSTE)



Uso vertical, para la fijación de los paneles de cerramiento. Se colocan a cada 40.5cm (16") o a 61cm (24") según el diseño de la pared y de la lámina que se utilice como cerramiento.



Especificación Técnica

STUD	Dimensiones (mm)								Propiedades de sección								Propiedades a torsión				
	w	f	t	r ₁	r ₂	a	b	l	Area (cm ²)	Masa(g/cm)	I _x (cm ⁴)	S _x (cm ³)	r _x (cm)	I _y (cm ⁴)	S _y (cm ³)	r _y (cm)	x (cm)	J (cm ⁴)	C _w (cm ⁶)	-x ₀ (cm)	r ₀ (cm)
1-5/8" x 1-1/4" x 0.40	41.3	31.8	0.40	2.0	0.5	2.0	12.0	4.74	0.4449	3.4963	1.3521	0.6548	1.7434	0.5503	0.2719	1.1122	1.1563	0.00029820	1.9982	2.4306	3.1913
1-5/8" x 1-1/4" x 0.44	41.3	31.8	0.44	2.0	0.5	2.0	12.0	4.74	0.4888	3.8415	1.4829	0.7181	1.7418	0.6028	0.2979	1.1106	1.1564	0.00040618	2.1834	2.4257	3.1861
1-5/8" x 1-1/4" x 0.50	41.3	31.8	0.50	2.0	0.5	2.0	12.0	4.74	0.5545	4.3577	1.6776	0.8124	1.7395	0.6809	0.3365	1.1081	1.1567	0.00068658	2.4563	2.4184	3.1784
1-5/8" x 1-1/4" x 0.70	41.3	31.8	0.70	2.0	0.5	2.0	12.0	4.74	0.7717	6.0653	2.3141	1.1206	1.7317	0.9339	0.4617	1.1000	1.1576	0.00131150	3.3265	2.3943	3.1530
1-5/8" x 1-1/4" x 0.80	41.3	31.8	0.80	2.0	0.5	2.0	12.0	4.74	0.8794	6.9114	2.6251	1.2712	1.7278	1.0563	0.5224	1.0960	1.1580	0.00193030	3.7387	2.3821	3.1402
1-5/8" x 1-1/4" x 0.90	41.3	31.8	0.90	2.0	0.5	2.0	12.0	4.74	0.9864	7.7525	2.9313	1.4195	1.7239	1.1762	0.5818	1.0920	1.1584	0.00281150	4.1360	2.3698	3.1273
2-1/2" x 1-1/4" x 0.40	63.5	31.8	0.40	2.0	0.5	2.0	12.0	4.74	0.5338	4.1950	3.5519	1.1187	2.5797	0.6153	0.2823	1.0736	1.0003	0.00039437	5.0538	2.0722	3.4787
2-1/2" x 1-1/4" x 0.44	63.5	31.8	0.44	2.0	0.5	2.0	12.0	4.74	0.5865	4.6099	3.8983	1.2278	2.5780	0.6740	0.3093	1.0720	1.0007	0.00048040	5.5280	2.0679	3.4744
2-1/2" x 1-1/4" x 0.50	63.5	31.8	0.50	2.0	0.5	2.0	12.0	4.74	0.6655	5.2308	4.4149	1.3905	2.5756	0.7612	0.3494	1.0695	1.0012	0.00070192	6.2288	2.0613	3.4679
2-1/2" x 1-1/4" x 0.70	63.5	31.8	0.70	2.0	0.5	2.0	12.0	4.74	0.9272	7.2874	6.1116	1.9249	2.5674	1.0441	0.4796	1.0612	1.0028	0.00162420	8.4775	2.0392	3.4461
2-1/2" x 1-1/4" x 0.80	63.5	31.8	0.80	2.0	0.5	2.0	12.0	4.74	1.0571	8.3080	6.9453	2.1875	2.5633	1.1810	0.5427	1.0570	1.0037	0.00231450	9.5525	2.0283	3.4353
2-1/2" x 1-1/4" x 0.90	63.5	31.8	0.90	2.0	0.5	2.0	12.0	4.74	1.1863	9.3236	7.7694	2.4471	2.5592	1.3150	0.6045	1.0529	1.0045	0.00332240	10.5950	2.0172	3.4245
3" x 1-1/4" x 0.40	76.2	31.8	0.40	2.0	0.5	2.0	12.0	4.74	0.5845	4.5942	5.3877	1.4141	3.0359	0.6435	0.2863	1.0492	0.9325	0.00063465	7.5469	1.9226	3.7435
3" x 1-1/4" x 0.70	76.2	31.8	0.70	2.0	0.5	2.0	12.0	4.74	1.0161	7.9861	9.2868	2.4375	3.0232	1.0919	0.4865	1.0366	0.9357	0.00161140	12.6890	1.8913	3.7137
3" x 1-1/4" x 0.80	76.2	31.8	0.80	2.0	0.5	2.0	12.0	4.74	1.1587	9.1066	10.5600	2.7717	3.0189	1.2351	0.5506	1.0325	0.9367	0.00251720	14.3080	1.8807	3.7036
3" x 1-1/4" x 0.90	76.2	31.8	0.90	2.0	0.5	2.0	12.0	4.74	1.3006	10.2220	11.8200	3.1024	3.0147	1.3753	0.6133	1.0283	0.9378	0.00373800	15.8810	1.8703	3.6937
3-5/8" x 1-1/4" x 0.40	92.1	31.8	0.40	2.0	0.5	2.0	12.0	4.74	0.6478	5.0916	8.3515	1.8136	3.5905	0.6725	0.2902	1.0188	0.8629	0.00072267	11.4770	1.7697	4.1305
3-5/8" x 1-1/4" x 0.44	92.1	31.8	0.44	2.0	0.5	2.0	12.0	4.74	0.7124	5.5990	9.1744	1.9923	3.5887	0.7369	0.3180	1.0170	0.8631	0.00023791	12.5680	1.7649	4.1265
3-5/8" x 1-1/4" x 0.50	92.1	31.8	0.50	2.0	0.5	2.0	12.0	4.74	0.8085	6.3547	10.3970	2.2578	3.5860	0.8322	0.3593	1.0145	0.8639	0.00108920	14.1720	1.7589	4.1210
3-5/8" x 1-1/4" x 0.70	92.1	31.8	0.70	2.0	0.5	2.0	12.0	4.74	1.1274	8.8608	14.4260	3.1326	3.5771	1.1412	0.4933	1.0061	0.8665	0.00169300	19.3420	1.7392	4.1028
3-5/8" x 1-1/4" x 0.80	92.1	31.8	0.80	2.0	0.5	2.0	12.0	4.74	1.2859	10.1060	16.4120	3.5640	3.5726	1.2908	0.5583	1.0019	0.8678	0.00294390	21.8230	1.7293	4.0936
3-5/8" x 1-1/4" x 0.90	92.1	31.8	0.90	2.0	0.5	2.0	12.0	4.74	1.4437	11.3470	18.3810	3.9915	3.5682	1.4372	0.6219	0.9978	0.8691	0.00436340	24.2380	1.7194	4.0846
4" x 1-1/4" x 0.40	101.6	31.8	0.40	2.0	0.5	2.0	12.0	4.74	0.6858	5.3903	10.5090	2.0688	3.9145	0.6873	0.2921	1.0011	0.8273	0.00056692	14.2770	1.6911	4.3801
4" x 1-1/4" x 0.70	101.6	31.8	0.70	2.0	0.5	2.0	12.0	4.74	1.1939	9.3835	18.1670	3.5762	3.9008	1.1663	0.4966	0.9884	0.8313	0.00190050	24.0780	1.6615	4.3536
4" x 1-1/4" x 0.80	101.6	31.8	0.80	2.0	0.5	2.0	12.0	4.74	1.3619	10.7040	20.6740	4.0698	3.8963	1.3192	0.5620	0.9842	0.8328	0.00301320	27.1740	1.6519	4.3449
4" x 1-1/4" x 0.90	101.6	31.8	0.90	2.0	0.5	2.0	12.0	4.74	1.5292	12.0190	23.1600	4.5591	3.8917	1.4687	0.6261	0.9800	0.8342	0.00455000	30.1890	1.6423	4.3362
6" x 2" x 0.90	152.4	50.8	0.9	2	0.5	2	12	4.74	2.445	19.197	86.368	11.340	59.436	8.699	11.340	18.872	22.885	6.285	42777635.398	-37.008	72.517
6" x 2" x 1.2	152.4	50.8	1.2	2	0.5	2	12	4.74	3.174	24.852	111.674	14.650	59.309	11.155	14.650	18.771	22.708	13.902	545933416.676	-36.728	72.136
6" x 2" x 1.5	152.4	50.8	1.5	2	0.5	2	12	4.74	3.955	31.103	138.147	18.124	59.1058	13.652	18.124	18.593	22.530	27.263	669459915.284	-36.373	71.857
6" x 2" x 1.8	152.4	50.8	1.8	2	0.5	2	12	4.74	4.929	38.692	170.696	22.401	58.8264	16.649	22.401	18.364	22.301	53.902	818228785.348	-35.941	71.349

Nota: Tolerancia +/- 1/32" (0.79mm)

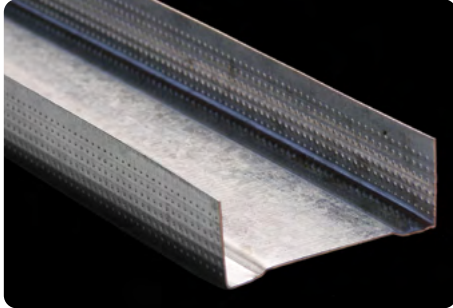
SIMBOLOGÍA		I _y = momento de inercia de la sección con respecto al eje y	J = constante de la torsión de la sección
A = Área de la sección	I _x = momento de inercia de la sección con respecto al eje x	S _{min y} = módulo elástico mínimo de la sección con respecto al eje y	C _w = constante del alabeo de la sección
I _x = momento de inercia de la sección con respecto al eje x		r _y = radio del giro de la sección con respecto al eje y	X ₀ = distancia entre el centroide y el centro del cortante
S _x = módulo elástico de la sección con respecto al eje x	r _x = radio del giro de la sección con respecto al eje x	x = coordenada "x" del centroide desde la fibra extrema izquierda	r ₀ = radio del giro polar con respecto al centro del cortante de la sección (o respecto al centroide para secciones bisimétricas)
r _x = radio del giro de la sección con respecto al eje x			

Perfilería Liviana en Acero Galvanizado

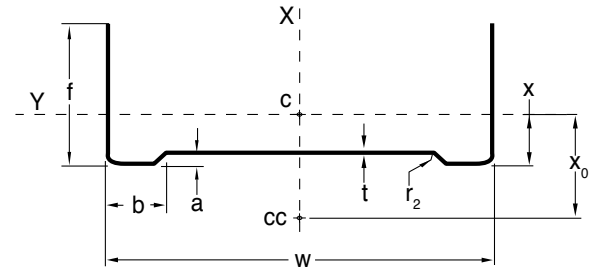


para sistemas de paredes livianas y cielos

TRACK (CANAL O RUNNER)



Uso horizontal, se fija al piso y al entrepiso y sirve como guía estructural para la colocación y fijación de los Studs en paredes livianas.



Especificación Técnica

Dimensiones (mm)								Propiedades de sección							Propiedades a torsión						
TRACK	w	f	t	r ₁	r ₂	a	b	Area (cm ²)	Masa(g/cm)	I _x (cm ⁴)	S _x (cm ³)	r _x (cm)	I _y (cm ⁴)	S _y (cm ³)	r _y (cm)	x (cm)	J (cm ⁴)	C _w (cm ⁶)	-x ₀ (cm)	r ₀ (cm)	
1-5/8" x 1" x 0.40	41.3	25.0	0.40	2.0	0.5	2.0	12.0	0.3619	2.8446	1.0372	0.5023	1.6929	0.2193	0.1250	0.7783	0.7458	0.00023276	0.7014	1.5066	2.3961	
1-5/8" x 1" x 0.44	41.3	25.0	0.44	2.0	0.5	2.0	12.0	0.3978	3.1268	1.1381	0.5511	1.6914	0.2406	0.1373	0.7776	0.7473	0.00025732	0.7686	1.5048	2.3937	
1-5/8" x 1" x 0.50	41.3	25.0	0.50	2.0	0.5	2.0	12.0	0.4516	3.5492	1.2885	0.6240	1.6891	0.2724	0.1556	0.7766	0.7495	0.00041462	0.8684	1.5020	2.3900	
1-5/8" x 1" x 0.70	41.3	25.0	0.70	2.0	0.5	2.0	12.0	0.6299	4.9507	1.7814	0.8627	1.6817	0.3766	0.2160	0.7732	0.7567	0.00104980	1.1925	1.4925	2.3777	
1-5/8" x 1" x 0.80	41.3	25.0	0.80	2.0	0.5	2.0	12.0	0.7186	5.6475	2.0231	0.9797	1.6779	0.4277	0.2458	0.7715	0.7603	0.00156150	1.3497	1.4877	2.3715	
1-5/8" x 1" x 0.90	41.3	25.0	0.90	2.0	0.5	2.0	12.0	0.8069	6.3418	2.2618	1.0953	1.6742	0.4781	0.2754	0.7698	0.7640	0.00222240	1.5038	1.4828	2.3652	
2-1/2" x 1" x 0.40	63.5	25.0	0.40	2.0	0.5	2.0	12.0	0.4508	3.5433	2.7771	0.8747	2.4820	0.2390	0.1286	0.7281	0.6421	0.00035917	1.9060	1.2298	2.8640	
2-1/2" x 1" x 0.44	63.5	25.0	0.44	2.0	0.5	2.0	12.0	0.4956	3.8952	3.0494	0.9604	2.4805	0.2623	0.1413	0.7274	0.6436	0.00038141	2.0895	1.2282	2.8619	
2-1/2" x 1" x 0.50	63.5	25.0	0.50	2.0	0.5	2.0	12.0	0.5627	4.4224	3.4560	1.0885	2.4783	0.2969	0.1601	0.7264	0.6459	0.00071281	2.3622	1.2258	2.8587	
2-1/2" x 1" x 0.70	63.5	25.0	0.70	2.0	0.5	2.0	12.0	0.7854	6.1728	4.7955	1.5104	2.4710	0.4106	0.2223	0.7230	0.6534	0.00133020	3.2514	1.2176	2.8480	
2-1/2" x 1" x 0.80	63.5	25.0	0.80	2.0	0.5	2.0	12.0	0.8963	7.0441	5.4562	1.7185	2.4673	0.4663	0.2531	0.7213	0.6572	0.00200440	3.6843	1.2134	2.8426	
2-1/2" x 1" x 0.90	63.5	25.0	0.90	2.0	0.5	2.0	12.0	1.0068	7.9128	6.1109	1.9247	2.4637	0.5214	0.2835	0.7197	0.6609	0.00290540	4.1096	1.2092	2.8372	
3" x 1" x 0.40	76.2	25.0	0.40	2.0	0.5	2.0	12.0	0.5016	3.9425	4.2580	1.1176	2.9135	0.2471	0.1300	0.7019	0.5994	0.00034032	2.8883	1.1205	3.1994	
3" x 1" x 0.70	76.2	25.0	0.70	2.0	0.5	2.0	12.0	0.8743	6.8715	7.3654	1.9332	2.9025	0.4246	0.2248	0.6969	0.6109	0.00144390	4.9324	1.1090	3.1843	
3" x 1" x 0.80	76.2	25.0	0.80	2.0	0.5	2.0	12.0	0.9979	7.8427	8.3851	2.2008	2.8988	0.4823	0.2558	0.6952	0.6147	0.00222030	5.5913	1.1051	3.1793	
3" x 1" x 0.90	76.2	25.0	0.90	2.0	0.5	2.0	12.0	1.1211	8.8112	9.3969	2.4664	2.8952	0.5393	0.2866	0.6936	0.6185	0.00323850	6.2390	1.1012	3.1742	
3-5/8" x 1" x 0.40	92.1	25.0	0.40	2.0	0.5	2.0	12.0	0.5649	4.4400	6.6831	1.4513	3.4395	0.2552	0.1314	0.6721	0.5569	0.00064200	4.4292	1.0123	3.6478	
3-5/8" x 1" x 0.44	92.1	25.0	0.44	2.0	0.5	2.0	12.0	0.6215	4.8843	7.3458	1.5952	3.4381	0.2801	0.1443	0.6714	0.5583	0.00065491	4.8594	1.0103	3.6458	
3-5/8" x 1" x 0.50	92.1	25.0	0.50	2.0	0.5	2.0	12.0	0.7057	5.5463	8.3308	1.8091	3.4359	0.3171	0.1635	0.6704	0.5606	0.00094332	5.4963	1.0082	3.6430	
3-5/8" x 1" x 0.70	92.1	25.0	0.70	2.0	0.5	2.0	12.0	0.9856	7.7463	11.5850	2.5158	3.4285	0.4386	0.2271	0.6671	0.5684	0.00157240	7.5755	1.0011	3.6334	
3-5/8" x 1" x 0.80	92.1	25.0	0.80	2.0	0.5	2.0	12.0	1.1251	8.8424	13.1960	2.8656	3.4248	0.4982	0.2584	0.6654	0.5723	0.00260020	8.5900	0.9975	3.6287	
3-5/8" x 1" x 0.90	92.1	25.0	0.90	2.0	0.5	2.0	12.0	1.2642	9.9359	14.7960	3.2131	3.4211	0.5571	0.2896	0.6638	0.5762	0.00365570	9.5884	0.9939	3.6239	
4" x 1" x 0.40	101.6	25.0	0.40	2.0	0.5	2.0	12.0	0.6029	4.7386	8.4692	1.6672	3.7479	0.2593	0.1320	0.6558	0.5357	0.00136910	5.5208	0.9581	3.9236	
4" x 1" x 0.44	101.6	25.0	0.44	2.0	0.5	2.0	12.0	0.6629	5.2101	9.3045	1.8316	3.7464	0.2845	0.1449	0.6551	0.5373	0.00027321	6.0549	0.9568	3.9218	
4" x 1" x 0.50	101.6	25.0	0.50	2.0	0.5	2.0	12.0	0.7528	5.9166	10.5540	2.0775	3.7442	0.3221	0.1643	0.6541	0.5397	0.00075990	6.8487	0.9548	3.9190	
4" x 1" x 0.70	101.6	25.0	0.70	2.0	0.5	2.0	12.0	1.0521	8.2690	14.6920	2.8922	3.7369	0.4455	0.2282	0.6507	0.5474	0.00171470	9.4470	0.9473	3.9097	
4" x 1" x 0.80	101.6	25.0	0.80	2.0	0.5	2.0	12.0	1.2011	9.4397	16.7390	3.2951	3.7332	0.5061	0.2597	0.6491	0.5513	0.00277320	10.7140	0.9439	3.9050	
4" x 1" x 0.90	101.6	25.0	0.90	2.0	0.5	2.0	12.0	1.3497	10.6080	18.7730	3.6955	3.7295	0.5659	0.2910	0.6475	0.5552	0.00394130	11.9610	0.9404	3.9004	
6" x 2" x 0.90	152.4	15.875	0.9	2	0.5	2	12	2.006	15.774	66.180	8.472	57.404	2.370	3.474	10.820	11.151	5.160	104728987.951	-17.374	60.935	
6" x 2" x 1.2	152.4	15.875	1.2	2	0.5	2	12	2.613	20.537	86.240	11.020	57.429	3.030	4.518	10.770	11.100	11.440	135342076.736	-17.272	60.909	
6" x 2" x 1.5	152.4	15.875	1.5	2	0.5	2	12	3.284	26.489	108.670	13.810	57.556	3.780	5.662	10.719	11.024	22.600	169714667.653	-17.145	60.985	
6" x 2" x 1.8	152.4	15.875	1.8	2	0.5	2	12	4.135	32.442	137.730	17.350	57.734	4.700	7.114	10.643	10.922	45.200	214023085.632	-16.993	61.112	

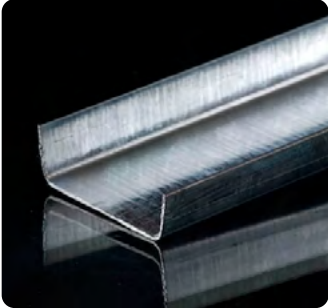
Nota: Tolerancia +/- 1/32" (0.79mm)

Perfilería Liviana en Acero Galvanizado

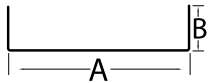


para sistemas de paredes livianas y cielos

CANAL CIELO



Elemento estructural principal de soporte del cielo al cual se fija el Furring. Además se utiliza como refuerzo horizontal rigidizador en paredes livianas.



DIMENSIONES			
	Ancho mm	Largo mts	Espesor mm
Canal Cielo	38.1	4.88	0.70
	38.1	4.88	0.95
	38.1	4.88	1.30

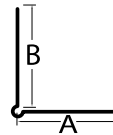
BASADO EN MM

A	B
38.1	9.5

ESQUINERO



Se utilizan en interiores, para reforzar y proteger esquinas de paredes o cielos en gypsum en ángulo de 90°.



DIMENSIONES			
	Ancho mm	Largo mts	Espesor mm
Esquinero	31.7	2.44/3.05	0.35

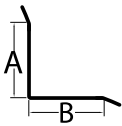
BASADO EN MM

A	B
31.7	31.7

ANGULAR



Elemento de fijación y nivelación perimetral en cielorrasos gypsum.

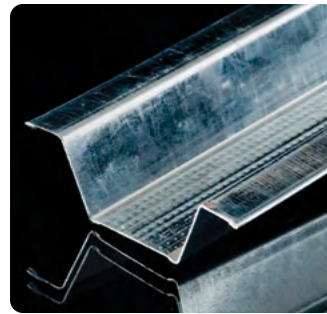


DIMENSIONES			
	Ancho mm	Largo mts	Espesor mm
Angular	25.4	3.05	0.44

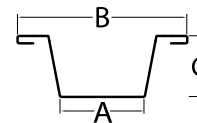
BASADO EN MM

A	B
25.4	25.4

FURRING CHANEL



Elemento transversal al Canal Cielo que se utiliza para fijar los paneles o láminas. Se colocan a cada 40.5cm (16") o a 61cm (24") según el diseño del cielo y de la lámina que se utilice como cerramiento.



DIMENSIONES			
	Ancho mm	Largo mts	Espesor mm
Furring Chanel	57	3.66	0.36
	57	3.66	0.40
	57	3.66	0.70
	57	3.66	0.90

BASADO EN MM

A	B	C
28.3	56.8	20